

LIBRARY

welcome

Law, economics, history, politics

The special library of the Liechtenstein Institute serves to provide researchers with literature and information. The library's holdings are primarily derived from the research fields of the Liechtenstein Institute - law, economics, history and politics.

Reference library

The library is also open to external visitors. The library's holdings can be viewed on site, but cannot be borrowed. Workstations and reading places are available.



Figures on the portfolio (01.2024)

10'214 Media total stock
40 current periodicals (20 journals, 6 loose-leaf collections, 10 yearbooks, 4 newspapers)

Where is what?



| | |
|--------|---------------------------------------|
| 2nd Fl | Politics (M) |
| 1st Fl | History (N) / Liechtensteinensia (NZ) |
| GF | Law (P) / Economics (Q) |

And the rest?

Our remaining media on topics outside our research fields are stored in the attic room or journal archive. The librarian will obtain these media for you if required.

Online search

Access to the library catalog and other useful links can be found on our website

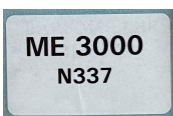
<https://www.liechtenstein-institut.li/en/institute/bibliothek>.

The library catalog of the Liechtenstein Institute is integrated into the general catalog of the Liechtenstein libraries.

How do I find a book?

Each book has a shelfmark and is therefore assigned a specific content and a fixed location in the library room. You can find the media on the library shelves using the shelfmark. The shelf mark of a book is listed in the library catalog.

Example:



M > Politics

ME > Politics / Political systems

ME 3000 > Democracy, western political system

N337 > Author abbreviation

Copy and scan

Copy machine in the GF, break room

Fee CHF 0,10 bw / CHF 0,20 colored (Payment at the secretariat)

Scan to USB stick

WLAN

is available



Opening hours

Mon – Fri 8.30 - 17.00

Any questions?

Library Liechtenstein Institute
Rosmarie Lorenz, Librarian

biblio@liechtenstein-institut.li

+423 320 33 10

